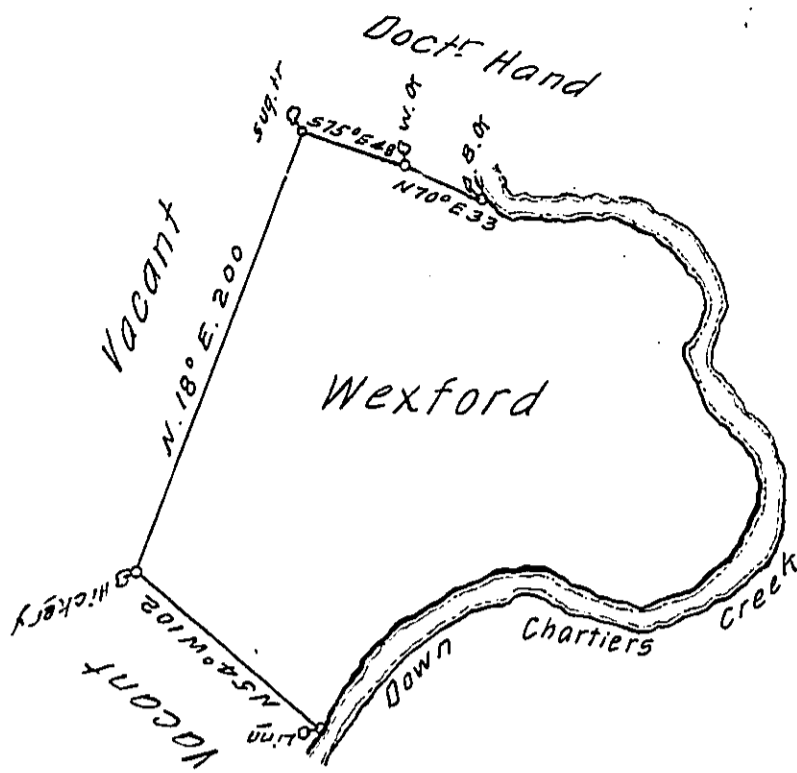


Courses up Char. Cr }
 Beg. at a B. or Run }

- S. 61° E. 57 f
- S. 54 E. 40 f
- S. 25 E. 16 f
- S. 35 W. 10 f
- S. 35 E. 52 f
- S. 19 E. 21 f
- S. 8 W. 20 f
- S. 40 W. 22 f
- S. 65 W. 32 f
- N. 76 W. 16 f
- N. 68 W. 16 f
- S. 75 W. 30 f
- S. 63 W. 39 f
- S. 38 W. 60 f
- 10 a linn.



In pursuance of an order N^o 3694, dated 28th July 1769 the above is a draught of a tract of land call'd WEXFORD situated on the West side Monongahala—, containing 235-1-17 acres with the usual allowance of 6 f C. for Roads, highways, &c. Survey'd for Alexander Drummond 24th November 1769

by

James Hendricks—

To

John Lukens Esq^r

Surveyor General.

IN TESTIMONY that the above is a copy of the original remaining on file in the Department of Internal Affairs of Pennsylvania, made conformably to an Act of Assembly approved the 16th day of February, 1833, I have hereunto set my Hand and caused the Seal of said Department to be affixed at Harrisburg, this eighth day of September 1911.

Henry Houch
 Secretary of Internal Affairs.